

Sanctuary

VENUE INFORMATION
2026



BLANCO
HORNER



SANCTUARY
ADELAIDE ZOO



Welcome

Thank you for considering Sanctuary.

Sanctuary offers premium catering and event solutions across seven distinct locations within the picturesque Adelaide Zoo. Whether it's our contemporary flagship venue, the Sanctuary Adelaide Zoo Function Centre, our stunning lawns, or unique spaces nestled within the natural habitats of the zoo's animal enclosures, every event hosted by the Sanctuary team promises an extraordinary and unforgettable experience.

Owned and operated by the multi-award-winning Blanco Horner Hospitality Management, Sanctuary Catering and Events boasts over four decades of expertise. We pride ourselves on delivering the highest quality, ethically sustainable cuisine and exceptional service.

Through our premiere partnership with Adelaide Zoo, we offer opportunities to enhance your event with unique experiences. Imagine delighting your guests with giant panda sightings, tiger feeding sessions or intimate animal handling encounters, creating unforgettable memories.

The team at Sanctuary eagerly awaits collaborating with you to infuse a touch of magic into your next event, regardless of the occasion.



Sanctuary

FUNCTION ROOMS

SANCTUARY CATERING & EVENTS



Function Rooms



Attenborough Room

\$1200 ROOM HIRE

(Sir David Attenborough)

Includes Durrell Gallery and Goodall Room.

A large space featuring floor to ceiling windows on the north and west aspects, with doors leading to the outside terrace and views across the Adelaide Zoo.

An operable wall provides the flexibility for a private room or a larger open space incorporating the Durrell Gallery. Dance floors can be located in the room, alternatively the Durrell Gallery can double as a dance floor.

The in-house sound system for speeches is throughout the room, ensuring your guests do not miss a word.

Durrell Gallery

\$800 ROOM HIRE

(Gerald Durrell)

Boats a polished concrete floor, water feature, fairy light canopy and 45 meters of floor to ceiling windows overlooking Botanic Park. Ideal for cocktail parties, pre-dinner drink and conference meal breaks.

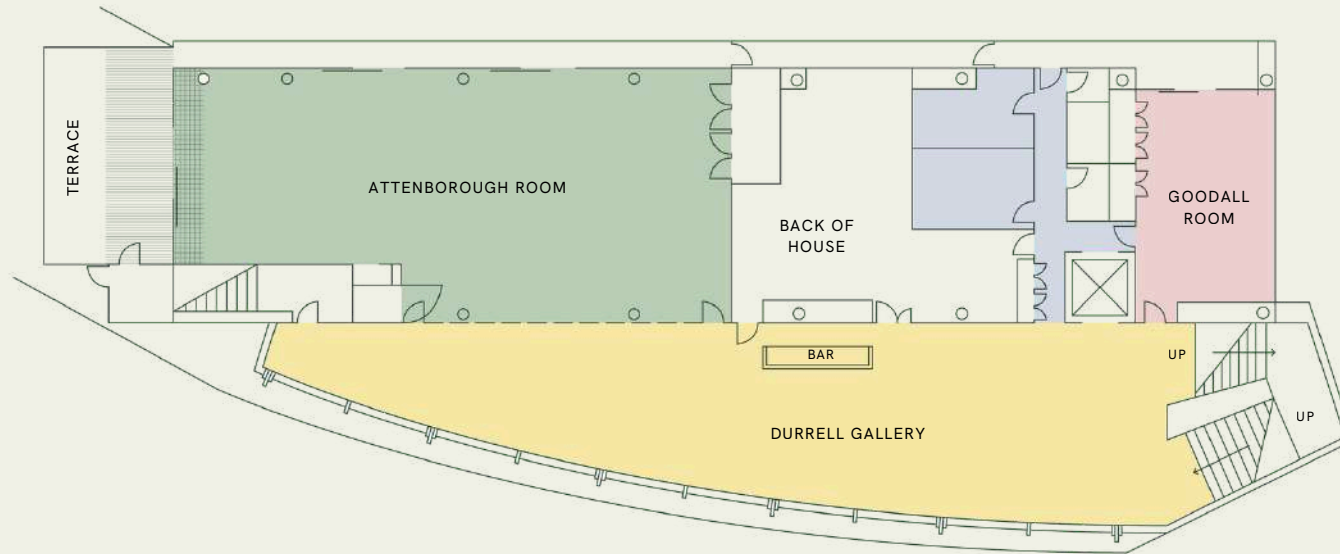
Goodall Room

\$600 ROOM HIRE

(Jane Goodall)

An intimate space perfect for meetings and a break-out space. The Goodall Room has a private terrace that has views across the Panda enclosure.

First Floor



Floor Plan

Seating capacities represents maximum numbers with allowance for a lectern only.

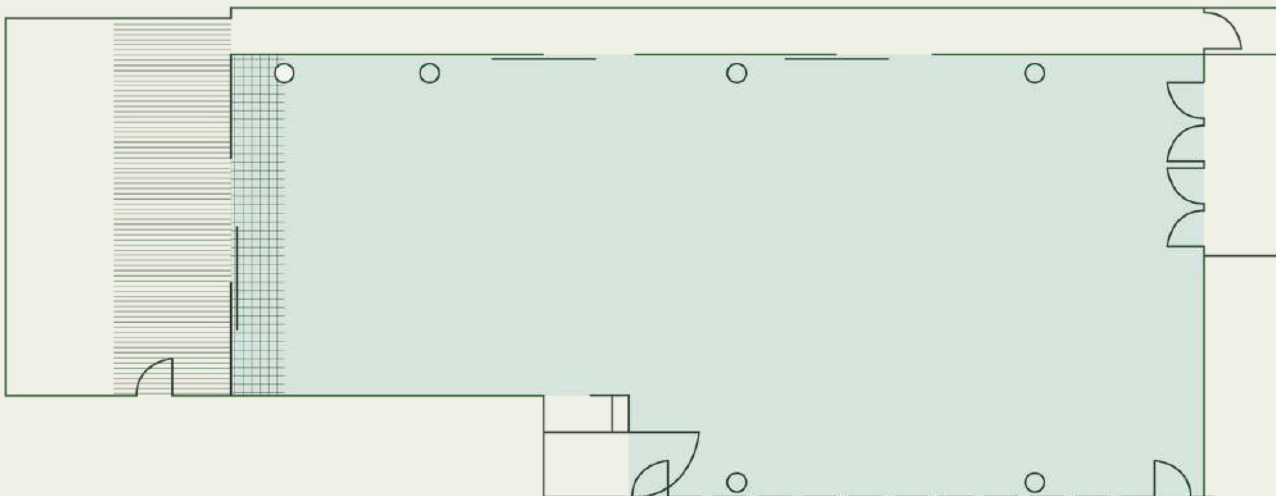
Set-up, display, staging, dance floor, entertainment & audio visual requirements will reduce capacities.

Subject to numbers and catering, room hire charges may be applicable.

Room diagrams are not to scale.

Scaled floor plans available upon request.

Room	Dimensions L X W (m)	Area (m2)	Ceiling Height (m)	Round Tables (10 Guests)	Long Tables (10 Guests)	Cocktail
Attenborough Room	27 x 9/11	286	3.8	240	260	280
Durrell Gallery	45 x 9/2	335	3 / 3.58	100	-	250
Goodall Room	10 x 6.6	66	3.8	40	40	60



Attenborough Room

A large space featuring floor to ceiling windows on the north and west aspects, with doors leading to the outside terrace and views across the Adelaide Zoo. The in-house sound system for speeches is throughout the room, ensuring your guests do not miss a word.

Seating capacities represents maximum numbers with allowance for a lectern only.

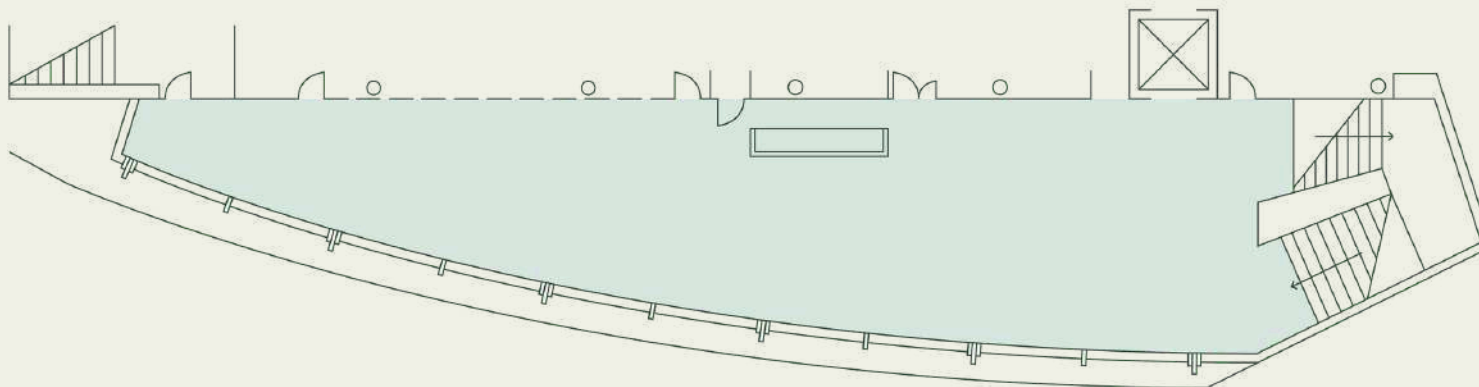
Set-up, display, staging, dance floor, entertainment & audio visual requirements will reduce capacities.

Subject to numbers and catering, room hire charges may be applicable.

Room diagrams are not to scale.

Scaled floor plans available upon request.

Dimensions L X W (m)	Area (m2)	Ceiling Height (m)	Round Tables (10 Guests)	Long Tables (10 Guests)	Cocktail
27 x 9/11	286	3.8	240	260	280



Durrell Gallery

Inclusive in Above Room Hire With a full -length window taking in views across Botanic Park and a tranquil water feature. This space is perfect for pre-event drinks and canapés. Dance the night away on the Durrell Gallery's polished concrete floor.

Dimensions L X W (m)	Area (m2)	Ceiling Height (m)	Round Tables (10 Guests)	Long Tables (10 Guests)	Cocktail
45 x 9/2	335	3/3.58	100	-	250

Seating capacities represents maximum numbers with allowance for a lectern only.

Set-up, display, staging, dance floor, entertainment & audio visual requirements will reduce capacities.

Subject to numbers and catering, room hire charges may be applicable.

Room diagrams are not to scale.

Scaled floor plans available upon request.

Goodall Room

An intimate space perfect for meetings and a break-out space. The Goodall Room has a private terrace that has views across the Panda enclosure.

Dimensions L X W (m)	Area (m2)	Ceiling Height (m)	Round Tables (10 Guests)	Theatre Seating	Cocktail
10 x 6.6	66	3.8	40	60	60

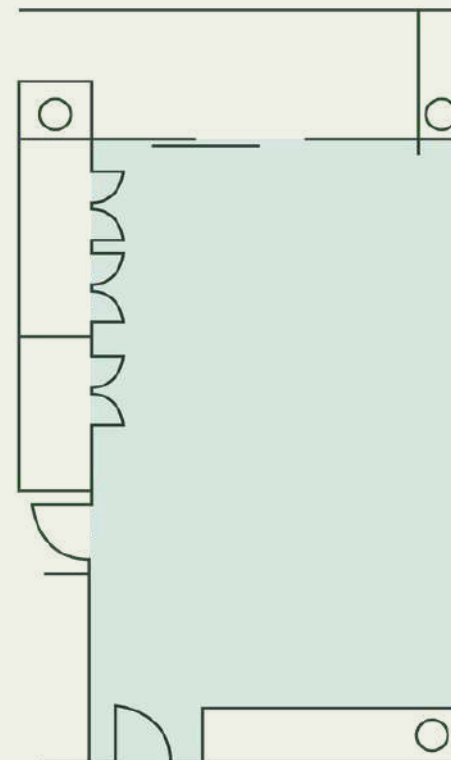
Seating capacities represents maximum numbers with allowance for a lectern only.

Set-up, display, staging, dance floor, entertainment & audio visual requirements will reduce capacities.

Subject to numbers and catering, room hire charges may be applicable.

Room diagrams are not to scale.

Scaled floorplans available upon request.



Adelaide Zoo Venues

Bamboo Forest

VENUE HIRE COST FROM \$2000
+SCE SET UP FEE FROM \$500

Create an event like no other alongside Xing Qui and Yi-Lan the only giant pandas in the Southern Hemisphere. This rare and remarkable setting offers a once-in-a-lifetime opportunity to wine and dine in the presence of these incredible animals, leaving your guests with memories they'll talk about for years to come.

***includes one dedicated keeper team members, shared while Xing Qui and Yi-Lan enjoy their favourite treats or enrichment activities.**

Immersion Longhouse

VENUE HIRE COST \$1750*
+SCE SET UP FEE FROM \$500

Surrounded by the lush, tranquil beauty of an Asian rainforest, the Immersion Longhouse offers a one-of-a-kind setting for your next event. Crafted from natural materials to blend seamlessly with its rainforest surrounds, this impressive venue features floor-to-ceiling glass panels that bring guests within a whisker of our majestic Sumatran Tigers for an experience like no other.

*** includes one dedicated keeper engage with our tigers with some of their favourite foods or enrichment activities.**

Giraffe Courtyard

VENUE HIRE COST \$850*
+SCE SET UP FEE FROM \$500

This open-air setting is ideal for creating magical moments for pre-dinner events, cocktail gatherings, or intimate dinners.

***Giraffe Feed is additional \$750 (up to 25 guests)**

Venue	Seated	Cocktail Undercover	Cocktail Total
Bamboo Forest	90	200	500
Immersion Longhouse	50	60	140
Giraffe Courtyard	50		150

Adelaide Zoo Venues

Plane Tree Centre

VENUE HIRE COST \$500
+SCE SET UP FEE FROM \$200

This venue offers a professional atmosphere. Its adaptable layout makes it suitable for everything from seminars to networking functions and receptions.

Sir Thomas E. Rotunda

VENUE HIRE COST \$850
+SCE SET UP FEE FROM \$500

Set within the lush grounds of Adelaide Zoo, the Sir Thomas Elder Rotunda is one of the city’s most iconic and unique event spaces. Offering 360-degree views of the picturesque gardens and the enchanting sounds of the zoo at night, this elegant outdoor venue provides an unforgettable setting for celebrations, corporate dinners, cocktail events, Christmas parties, and family gatherings.

Central Lawns

HIRE COST FROM \$2000
+SCE SET UP FEE FROM \$1000

Nestled within lush, green surroundings, the Central Lawns offer a spacious, adaptable, and picturesque setting for any occasion. Framed by natural beauty and the ambient sounds of nearby wildlife, this expansive outdoor venue is ideal for breakfast functions, cocktail gatherings, gala dinners, marquee events, outdoor cinemas, and wedding ceremonies or receptions.

Nature’s Playground

HIRE COST FROM \$750
+SCE SET UP FEE FROM \$500

A vibrant, family-friendly venue designed to delight both children and adults. It’s a popular choice for corporate family fun days, birthday parties, education programs, and community events.

Venue	Seated	Cocktail Undercover	Cocktail Total
Plane Tree Centre	50	-	100
Sir Thomas Elder Rotunda	150 130 with dance floor		250
Central Lawns	500	-	1000
Nature’s Playground	90	150	400



IMMERSION
LONGHOUSE



CENTRAL LAWNs



SIR THOMAS
ELDER ROTUNDA



BAMBOO FOREST



NATURE'S
PLAYGROUND



PLANE TREE
CENTRE

Sanctuary

LOCATION

SANCTUARY CATERING & EVENTS



Location

Sanctuary is located in the beautiful Adelaide parklands, with a surrounding view of Botanic Park and The Adelaide Zoo.

DISTANCE

Airport: 20 min by car/taxi

Bus Local: 10 min walk

Bus Interstate: 10 min by car/taxi

Train Station: 15 min walk

Tram: 10 min walk

PARKING

— Metered parking (Pay By Plate)

P Multi level car parks

INFORMATION

Sanctuary entrance via Plane Tree Drive

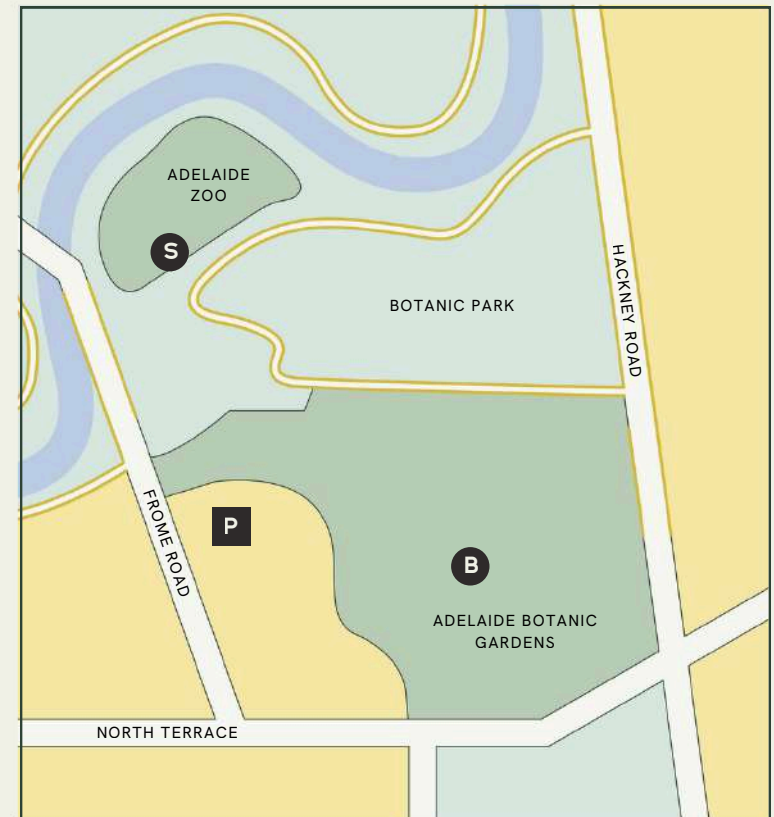
Plane Tree Drive is a one way public road

Deliveries Via loading zone off Plane Tree Drive by appointment

BLANCO VENUES

S Sanctuary Adelaide Zoo

B Botanic Gardens Restaurant, Kiosk & Cafe



Adelaide Zoo Map

SANCTUARY ADELAIDE ZOO FUNCTION CENTRE

I15

BAMBOO FOREST

I13

IMMERSION LONGHOUSE

O4

SIR THOMAS ELDER ROTUNDA

I9

CENTRAL LAWNS

J6

GIRAFFE COURTYARD

F7

PLANE TREE CENTRE

E17

NATURE'S PLAYGROUND

B13





"The service at the Sanctuary was impeccable. Staff were absolutely lovely and incredibly polite."

SUSAN



"Great venue with terrific atmosphere, view and convenient location."

HUNTER

General Information

Sanctuary Catering & Events (SCE) is proudly managed by the award winning team from Blanco Horner Hospitality Management. If you require any further information, please do not hesitate to contact one of our friendly events team.



SECURITY

Security may be required for your event. Guards are charged at \$60 per hour for a min of 4 hours. Total security cost is dependent on venue and event. Please consult our events team for more information.

GETTING THERE

Located on Plane Tree Drive, Sanctuary Adelaide Zoo Function Centre (SAZ) is located on the first floor above the main entrance to Adelaide Zoo. Entry doors are to the right of the Zoo Shop on the front of the building. All other venue spaces are located with the Adelaide Zoo.

DISTANCE

Airport: 20 min by car/taxi

Bus Local: 10 min walk

Bus Interstate: 10 min by car/taxi

Train Station: 15 min walk

Tram: 10 min walk

PARKING

There is extensive parking on Plane Tree Drive and surrounding areas, at either multi-level facilities or on the street. Public parking is metered during the day and free in the evenings*. SAZ does not have any dedicated parking facilities.

DELIVERIES

Deliveries can be made via Gate 1 off Plane Tree Drive between 10am and 4pm, by prior arrangement. As SAZ has limited storage facilities it is best to discuss delivery times and storage facilities with your Event Coordinator

ACCESS

Access to the first floor is via the main staircase. Wheelchair access is available via a service lift in the foyer.

Contact

Sanctuary

Jamie Ballentine - Venue & Events Manager

sanctuary@blancohorner.com.au

(08) 8230 1313

www.blancohorner.com.au/event-venues/sanctuary/

